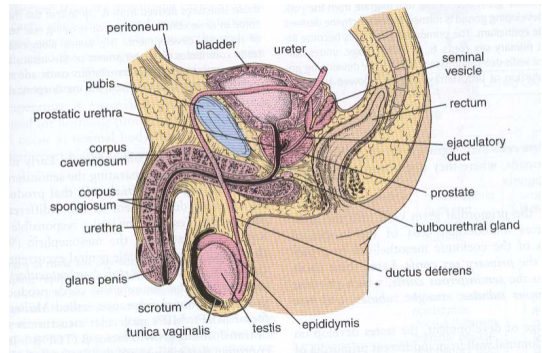


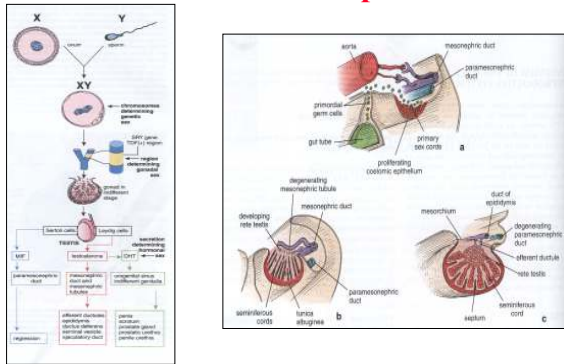
Male Reproductive System

- Testis
- Accessory Glands
 - Seminal vesicles
 - Prostate gland
 - Bulbourethral glands &
 - Penis

Overview of the male Reproductive System



Testicular Development



Structure of the testis

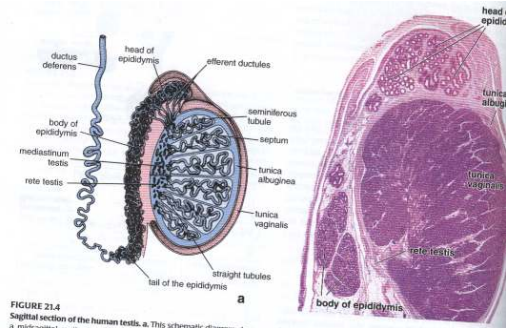
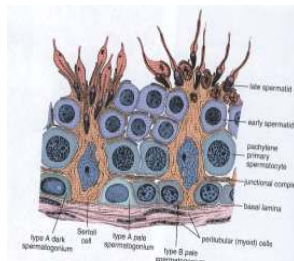
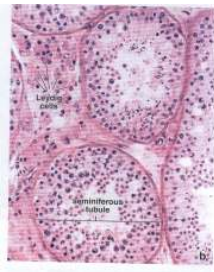
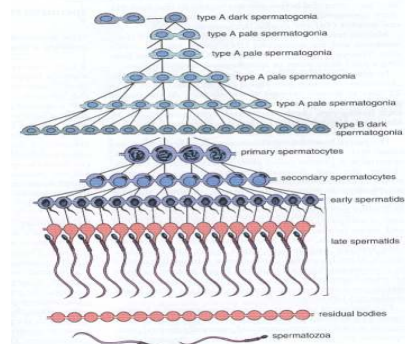


FIGURE 21.4
Sagittal section of the human testis. a. This schematic illustrates the structure of the testis and its associated ducts. b. This histological section shows the internal structure of the testis, including the seminiferous tubules and the rete testis.

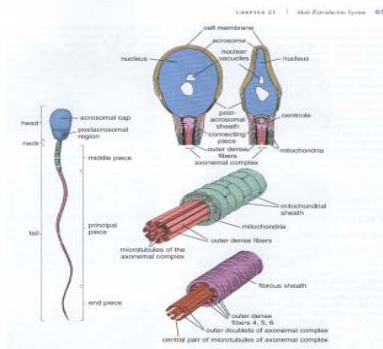
Seminiferous tubules



Spermatogenesis

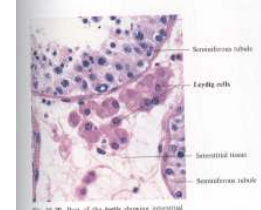


Structure of mature Sperm



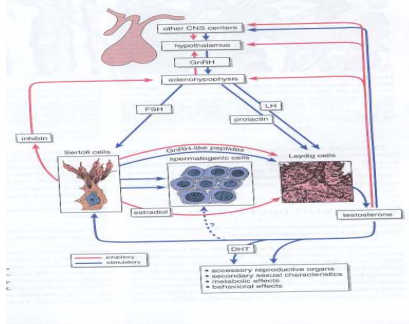
Leydig Cells

- Interstitial cells in the seminiferous tubules.
- They are the endocrine portion of the testis.
- They secrete the male steroid hormone, Testosterone.
- Function under the influence of Gonadotrophic hormone from the adenohypophysis

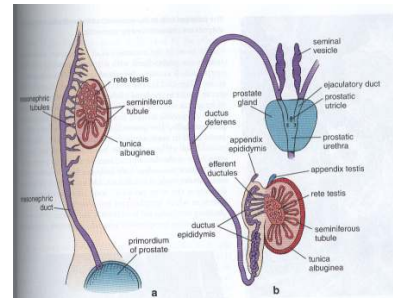


Histophysiology

Hormonal regulation of male Reproductive function



Duct System



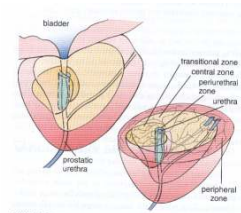
Accessory Glands

1. Seminal Vesicles

- are elongated sacs with a deeply folded mucosa.
- epithelium composed of pseudostratified columnar epithelium.
- Cells secrete some of the components of the seminal fluid.

2. Prostate gland

- Glandular epithelium is simple cuboidal to columnar.
- Contains secretion granules
- It surrounds the urethra as it leaves the urinary bladder, and
- Empty its secretion, a thick milky alkaline fluid, into the prostatic urethra.

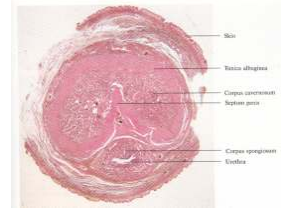


3. Bulbourethral glands

- Also called Cowper's gland.
- They are tubular alveolar glands lying just below the prostate.
- Each gland is divided into lobules by connective tissue septa.
- The secretory acini are composed of simple cuboidal to columnar epithelium.
- The excretory ducts are lined by simple to stratified epithelium.
- The outer walls contain fibrous tissue and a thin layer of smooth muscle.
- The glands secrete a clear viscous fluid.

4. Penis

- Has urinary and reproductive functions.
- Externally covered by skin.
- Made up of three cylinders of cavernous tissue running the length of the organ.
- The cavernous bodies contain erectile tissue of the penis.



Histopathology

Tumors of the male Reproductive System

- Carcinoma of the prostate gland
- Seminoma of the Testis